

MONTHLY MEMBERSHIP PROGRESS REPORT

LOCATION PENNSYLVANIA

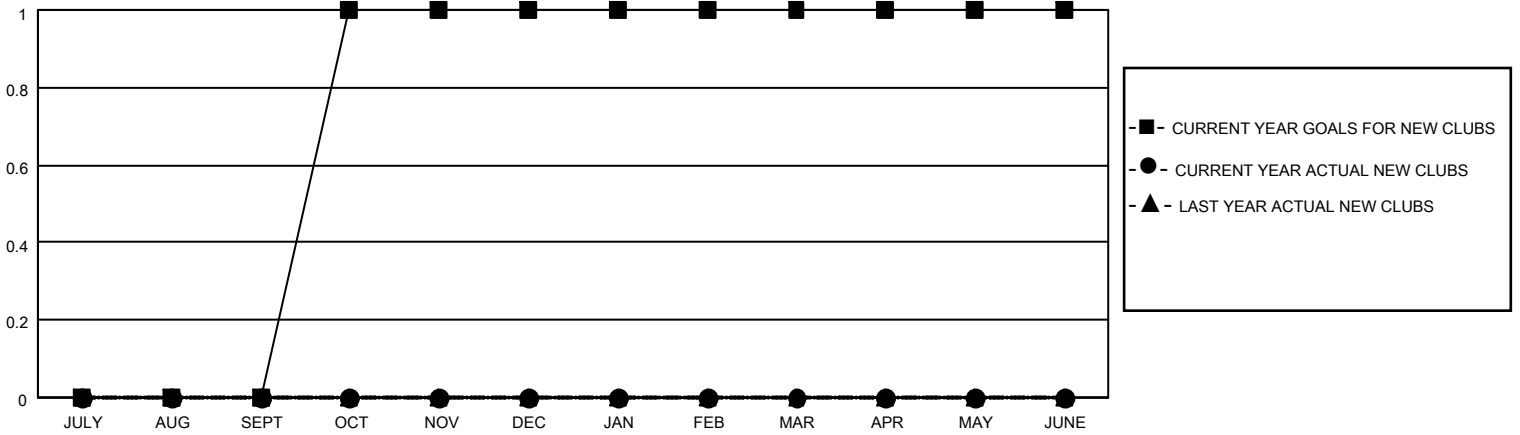
District 14 E

Results as of: 10/31/2020

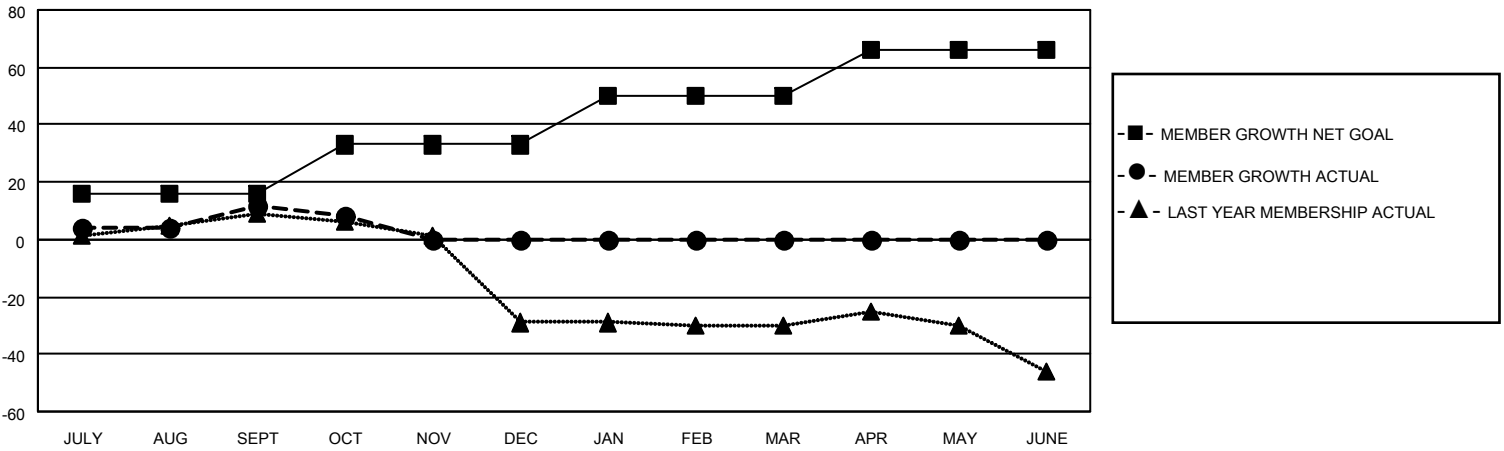
Clubs			
RESULTS FOR 2020-2021			
QUARTER	NEW CLUB GOAL	NEW CLUBS	DROPPED CLUBS
JULY/AUG/SEPT	0	0	0
OCT/NOV/DEC	1	0	0
JAN/FEB/MAR	0	0	0
APR/MAY/JUNE	0	0	0

Members			
RESULTS FOR 2020-2021			
QUARTER	MEMBER GROWTH NET GOAL	MEMBER GROWTH ACTUAL	DROPPED MEMBERS ACTUAL (including transfers)
JULY/AUG/SEPT	16	24	11
OCT/NOV/DEC	17	6	9
JAN/FEB/MAR	17	0	0
APR/MAY/JUNE	16	0	0

GOALS AND ACTUAL NEW CLUBS CUMULATIVE



GOALS AND ACTUAL MEMBERS CUMULATIVE



DROPPED CLUBS: 0

11 CLUBS OF 34 ADDED 1 OR MORE NEW MEMBERS

<u>GENDER DISTRIBUTION</u>	
MALE	576 (71.38%)
FEMALE	231 (28.62%)

<u>DROPPED MEMBERS</u>	
DECEASED	1
CLUB CANCELLED	0
OTHER	19
TOTAL	20

[CLICK HERE FOR CUMULATIVE MEMBERSHIP DATA](#)

TOTAL FAMILY UNIT MEMBERS	200
FAMILY MEMBERS PAYING HALF DUES	105